

Wireless Solutions

www.netversant.com



Cisco Outdoor Mesh

The broad acceptance of wireless technologies indoors, in tandem with the establishment of industry standards and interoperability, is now extending connectivity to mobile users outdoors. As a Cisco Advanced Technology Partner for both the Mesh (AP 1500) and Mobile Access Router products, NetVersant brings years of indoor and outdoor wireless deployment expertise to this challenging environment. Ideal for outdoor wireless LAN deployments, mesh technology addresses an extensive range of applications:

Enterprise Mesh *Moving Indoor WiFi Outside*

Universities and Healthcare

Extending WiFi coverage across the entire campus

Hospitality

Indoor/outdoor mesh provides new application delivery options

Manufacturing – Shipping and Receiving

Inventory applications, hand-held scanner, RFID

Wireless Bridging

P2P/P2MP links between buildings

Municipal Mesh *State, City and County*

Public Safety/Homeland Defense

Police, fire and first responders

Wireless infrastructure, vehicles and clients

Wireless Access for Fixed Applications

Video surveillance, sensors

Public Service

Hot spot access for city workers, utilities and inspectors

Digital Divide and Economic Development

WiFi broadband access in under-served communities

Service Provider *Managed WiFi Services*

“Hot Zones”

Extend the existing “hot spots” into “hot zones” covering high-traffic outdoor areas

Wireless ISPs

Competitive last-mile access allows using WiFi for broadband service

Cable Operators

Extend the network offering beyond the cable point

superior service capabilities

- ✓ Wireless business requirement planning
- ✓ Wireless architecture design
- ✓ Proof of concept / Design / ROI validation
- ✓ Implementation planning
- ✓ Implement site modeling
- ✓ Implementation and coverage validation
- ✓ Ongoing performance and optimization
- ✓ Knowledge transfer

we are convergence

In the ever-converging world of voice, video and data, NetVersant offers multiple service lines to provide total communications solutions.

- Wireless/Mobility Solutions
- IT Infrastructure Solutions
- VoIP/Telephony Solutions
- Electronic Security Solutions

Industry-Leading Unified Architecture Model

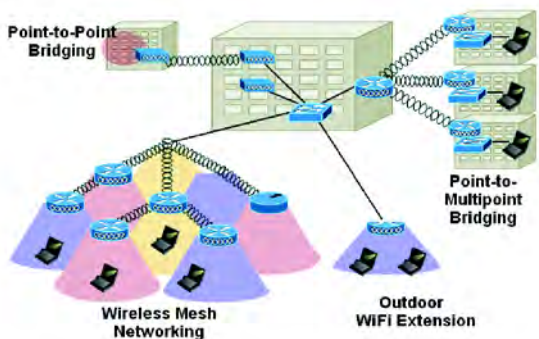
Cisco has developed the first unified architecture model for deploying both indoor and outdoor wireless LANs. A single administrative interface for both indoor and outdoor deployments simplifies management, reduces training time and lowers total cost of ownership. Utilizing the intrinsic benefits of the centralized controller-based architecture, the Cisco Mesh solution delivers a Self-Configuring, Self-Healing Mesh network. Key to the success of this technology is Cisco's new Adaptive Wireless Path (AWP) Protocol in combination with Lightweight Access Point Protocol (LWAPP).

Utilizing state-of-the-art network integration tools, physical site surveys and WLAN planning tools, supported by the most highly trained technicians in the industry and an extensive truck fleet, NetVersant provides a "one-stop shop" for network design, integration, site survey and installation of Cisco's Mesh solution.

NetVersant has extensive experience in deploying indoor and outdoor wireless systems. Combining this experience with the Cisco Unified Wireless Network architecture allows one common controller with optional N+1 redundancy to manage both indoor and outdoor applications, resulting in:

- ✓ Improved public safety by allowing police and fire departments to access and disseminate information from the field
- ✓ Greater operational efficiencies and productivity by extending connectivity outdoors
- ✓ Savings on network infrastructure capital equipment and operating expenses
- ✓ Expanded economic and educational opportunities by extending internet access to inner cities and rural communities
- ✓ Increased employee, staff and student productivity in campus environments by providing secure internet access to roaming users
- ✓ New and improved community services by providing wireless data access to public works, parks and recreation, and other field-based officials
- ✓ Improved first responder readiness, such as giving firefighters access to blueprints online before entering burning buildings, or giving EMS workers access to life-saving medical records before treating people at the scene

Using Cisco AP 1500 Mesh radios in combination with the Cisco Unified Wireless Network architecture, NetVersant delivers systems that provide best-in-class performance, security, manageability and scalability. NetVersant's careful pre-installation network planning, coupled with tight integration with existing network designs, security schemas and redundancy criteria, is essential for overall network performance and long-term viability.



NetVersant design objectives

- Ease of Deployment and Management
- Robust Security
- Seamless Mobility
- Preservation of Ethernet best practice design principles across the WLAN
- Scalability

Don't delay...
Contact NetVersant today for industry-leading wireless solutions.

customer support centers

ARIZONA
Phoenix

CALIFORNIA
Los Angeles/Orange County
Mountain View
Sacramento
San Diego
San Francisco
San Jose

COLORADO
Denver

GEORGIA
Atlanta

IDAHO
Boise

MARYLAND
Baltimore

MASSACHUSETTS
Boston

MINNESOTA
Minneapolis/St. Paul

NEVADA
Las Vegas
Reno

NEW MEXICO
Albuquerque

NEW YORK
New York

OREGON
Portland

PENNSYLVANIA
Philadelphia

TEXAS
Austin
Dallas
Houston
Weslaco

VIRGINIA
Chantilly
Richmond

WASHINGTON
Bellingham
Olympia
Seattle
Spokane